

DECATUR BLUEPRINT

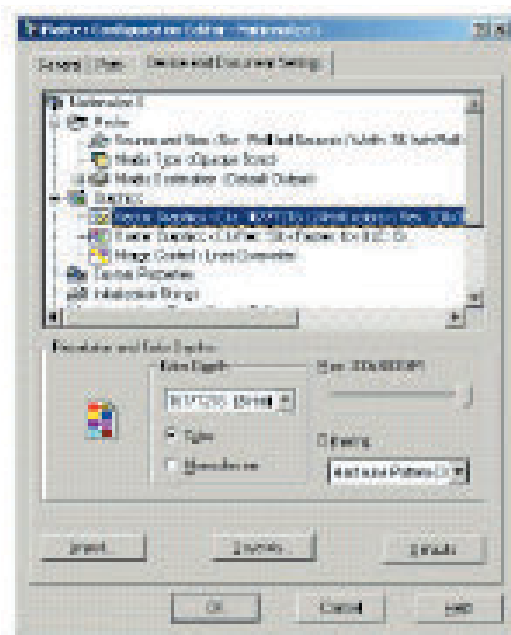
Plotting Instructions for AutoCAD LT, 2000, 2000i, and 2002

Configuring The Plotter

1. From the file menu, choose Plotter Manager.
2. Double-click "Add-A-Plotter-Wizard", and click Next.
3. Select My Computer, and click Next.
4. Under Manufacturers, select Hewlett-Packard and under Models, select DesignJet hp755cm-c3198b or hp750c-3196b, and click next.
5. Click Continue, and Next.
6. Select Plot to File, and click Next.
7. Name the plotter "Decatur Blueprint", and click Next.

Steps 8 thru 10 are defaults in AutoCAD 2000.
Skip to step 11.

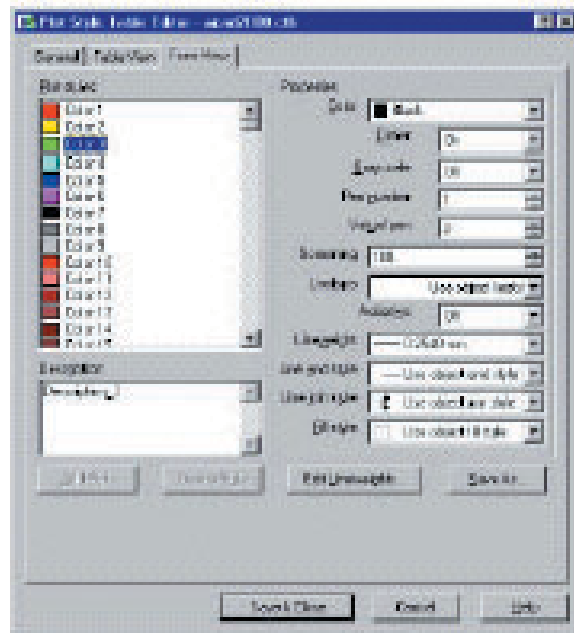
8. Click Edit Plotter Configuration.
9. Go to the Device and Document Settings tab and under Graphics, select Vector Graphics.
10. Set Color Depth at 16777216 (24-bit) Color.



11. Click OK and Finish

Creating The Plot Style

1. From the file menu, select Plot Style Manager
2. Double click "Add-a-plot-style", and click Next.
3. Select Start from Scratch, and click Next.
4. Select Color Dependent Plot Style Table, and click Next.
5. Name the CTB "Decatur Blueprint" and click Next.
6. Click Plot Style Table Editor.



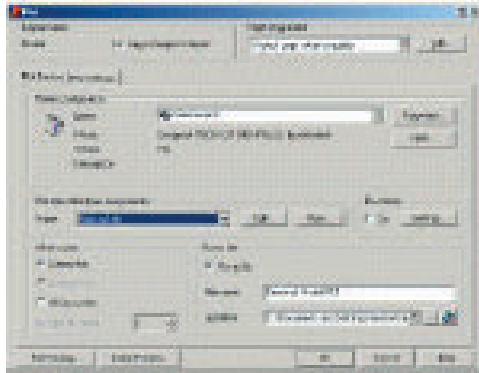
7. Highlight all 255 colors in left column:
 - a. Set "color" to black.
 - b. Set "Pen Number" to 7 (black).
8. Click on one color in left column to highlight it.
9. For black lines:
 - a. Set the Virtual Pen number to 7.
 - b. Set the line weight to the desired thickness.
10. For screened lines:
 - a. Set the Virtual Pen number to match color number.
 - b. Set the Grayscale to On and the Screening to the appropriate value.
11. Repeat steps 8 thru 10 for each of the remaining colors you normally use. (There is no need to set up the colors you don't use)
12. Click Save and Close, then Finish.



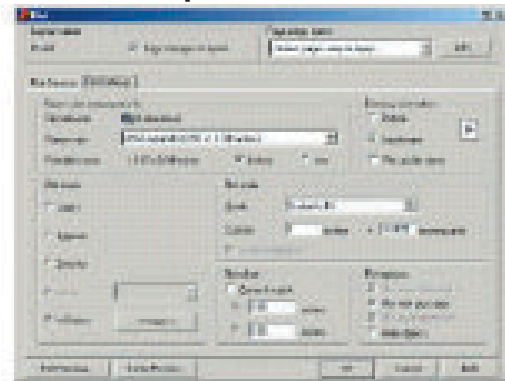
DECATUR BLUEPRINT

Making The Plot File

1. From the file menu, select Plot.
2. Under Plot Device, be sure that the "Decatur Blueprint.pc3" file you created is selected for the Plotter Configuration and the "Decatur Blueprint.ctb" file you created is selected for the Plot Style Table. Check Plot to File, and note the path where your plot file will be saved. (name plot to match sheet no.)



3. Under Plot settings, set the appropriate choices for your plot. (you may need to use ARCH expand C, D, E, and E1 for large sheets)



4. Set desired plot scale and center the plot.
5. Click on window and select your crop marks.
6. Do a full preview to verify that pen widths, screen values, and page layout settings are correct.
7. Click OK to create the plot file.